



VetroBlackout

Oscuranti

Blackout



Esterno
Exterior Application



Ignifugo
F.R.



Tenda a Rullo
Roller Blind



Tenda Orizzontale
Horizontal Blind



SUNCOVER®

SOLIDITÀ ALLA LUCE COLOUR FASTNESS TO LIGHT	FATTORE DI APERTURA (F.A.) OPENESS FACTOR (O.F.)	ALTEZZA ROTOLO FABRIC ROLL W
7 - 8 (ISO 105B02)	0%	170 cm

LARGHEZZA TENDA > H ROTOLO E ALTEZZA TENDA < H ROTOLO: TELO GIRATO SENZA GIUNTE
LARGHEZZA E ALTEZZA TENDA > H ROTOLO: TELO GIRATO CON GIUNTE ORIZZONTALI

ROLLER BLIND W > FABRIC ROLL W AND ROLLER BLIND H < FABRIC ROLL W: FABRIC MANUFACTURED NOT IN ITS ROLL DIRECTION, WITHOUT JOINTS
ROLLER BLIND W AND H > FABRIC ROLL W: FABRIC MANUFACTURED NOT IN ITS ROLL DIRECTION, WITH HORIZONTAL JOINTS

PRESTAZIONI OTTICO - ENERGETICHE

OPTICAL AND ENERGY PERFORMANCES

			10792	11036	10793	10590	10794	11035
Fattori ottici Optical factors	Trasmissione luminosa Light transmittance	TV%	0	0	0	0	0	0
	Trasmissione energia solare Solar transmittance	TS%	0	0	0	0	0	0
Fattori termici Thermal factors	Riflessione energia solare Solar reflectance	RS%	70	47	13	45	49	38
	Assorbimento energia solare Solar absorptance	AS%	30	53	87	55	51	62
	g Tot Fattore solare totale g Tot Total Solar factor	EST.*	0,03	0,02	0,01	0,02	0,02	0,02
		EST.**	0,01	0,02	0,02	0,02	0,02	0,02
INT.*		0,22	0,36	0,23	0,37	0,35	0,39	
INT.**		0,27	0,18	0,28	0,18	0,17	0,19	

g Tot calcolati secondo EN 13363-2 considerando: *vetro C: g=0,59; Ug= 1,2; **vetro D: g=0,32; Ug=1,1.

g Tot calculated according to EN 13363-2 considering: *Type "C" glazing: g=0,59; Ug=1,2; ** Type "D" glazing: g=0,32; Ug=1,1;

CERTIFICAZIONI:
CERTIFICATIONS:



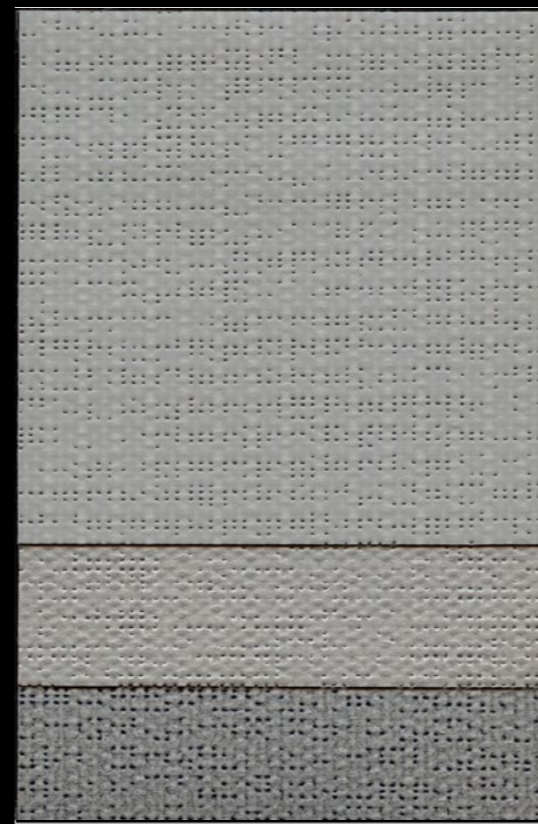
VETROBLACKOUT D12



10792

11036

10793




10790


10794


11035


CARATTERISTICHE *Main Characteristics*

 PES spalmato PVC
PES coated in PVC


 650 g / m²
650 g / m²


 Classe 2 ITA - B1 - NFPA 701 - Bs2,d0


 Spessore mm 0,60 c.a.
Thickness mm 0,60 aver.


 Termosaldabile
Heat-sealable

MANUTENZIONE *Maintenance*

 Pulizia: spugna bagnata e sapone neutro
Cleaning: with a wet sponge and mild soap

 Non lavare in lavatrice
Do not use washing machine

 Non usare solventi di qualsiasi tipo
Do not use any solvents

 Non stirare
Do not iron



ATTENZIONE: TESSUTO DISPONIBILE A MAGAZZINO.
PLEASE NOTE: FABRIC AVAILABLE IN STOCK.

